

**UNIVERSITY OF EL SALVADOR
SCHOOL OF ARTS AND SOCIAL SCIENCES
DEPARTMENT OF FOREIGN LANGUAGES**



TITLE:

**TOURISTIC SERVICE CHALATE ADVENTURE TOURS
SERVICIO DE TURISMO DE AVENTURA EN CHALATENANGO**

PRESENTED BY:

DIEGO ANDRÉ CUBÍAS CORVERA	CC17050
LUIS ERASMO ESCOBAR HERRERA	EH18013
YESLI EMPERATRIZ FLORES LEMUS	FL18006
NICOLÁS ENRIQUE PEÑA RAMÍREZ	PR12005

PROFESSOR:

LICDA. GLORIA CAROLINA ORTEGA

GENERAL COORDINATOR OF THE GRADUATION PROCESS:

LIC. MIGUEL ÁNGEL CARRANZA CAMPOS, MSE

FINAL REPORT OF SPECIALIZATION COURSE ON TOURISM

IN ORDER TO OBTAIN THE DEGREE OF:

**BACHELOR OF MODERN LANGUAGES SPECIALTY IN FRENCH AND ENGLISH
UNIVERSITY CAMPUS, DR. FABIO CASTILLO FIGUEROA, SAN SALVADOR,
EL SALVADOR, CENTRAL AMERICA, OCTOBER 29TH, 2025**

AUTHORITIES OF THE UNIVERSITY OF EL SALVADOR

MSC. JUAN ROSA QUINTANILLA QUINTANILLA

RECTOR

DRA. EVELYN BEATRIZ FARFAN MATA

VICE-RECTOR

ROGER ARMANDO ARIAS ALVARADO

ADMINISTRATIVE VICE-RECTOR

LIC. PEDRO ROSALIO ESCOBAR CASTANEDA

GENERAL SECRETARY

AUTHORITIES OF THE SCHOOL OF ARTS AND SCIENCES

MSC. JULIO CESAR GRANDE RIVERA

DEAN

MSC. MARIA CRUZ JURADO

VICE-DEAN

MTRA. NATIVIDAD THESHÉ PADILLA

SECRETARY OF SCHOOL OF HUMANITIES

AUTHORITIES OF THE DEPARTMENT OF FOREIGN LANGUAGES

MTI JOSÉ ISRAEL OLIVA

INTERIM COORDINATOR OF THE FOREIGN DEPARTMENT

LIC. MIGUEL ÁNGEL CARRANZA CAMPOS, MSE

GENERAL COORDINATOR OF THE GRADUATION PROCESS

LICDA. GLORIA CAROLINA ORTEGA

SPECIALIZATION PROFESSOR

Índex

Abstract	6
Introduction	7
CHAPTER I: PROFILE OF A TOURIST PRODUCT	8
Objectives	9
General Objective	9
Specific Objectives	9
Justification	10
Product Description	11
Proposed Itinerary	11
Qualities of the Tourist Service	15
Good Health and Well Being	15
Decent Work and Economic Worth	16
Sustainable Cities and Communities	16
Climate Action	16
Life on Land	17
Tourism Typology	17
Rural Tourism	17
Nature Tourism	17
Adventure Tourism	18
Ecotourism	18
Cultural Tourism	18
Gastronomic Tourism	18
Principles for Sustainable Tourism Development	18
Protecting Cultural Heritage	18
Conserving Natural Resources	19
Prioritizing Local Communities	19
Align Visitor Expectations	19
CHAPTER II: ELEMENTS FOR THE DESIGN OF A TOURIST PRODUCT	21
The History of Tourism	22
History of Tourism in El Salvador	23
Natural Resources in Chalatenango	26

Surface Water and Hydroelectric Resources	26
Forests, Flora, and Climate	26
Fauna and Biodiversity	27
Agriculture, Soil, and Land Use	27
Crafts and Non-Timber Resources	28
Cerro Eramon and La Puntona	29
Types of Soil in El Salvador	31
Types of Soil and Characteristics	31
Spatial Distribution and Agricultural Applications	34
Importance and Environmental Challenges	35
Cultural Identity and Intangible Tourism Resources	36
Concept of cultural identity	37
Elements that make up cultural identity	37
Examples of cultural identity in different countries and regions	37
Factors influencing cultural identity	38
Importance of preserving cultural identity	39
Ways to preserve and promote cultural identity	39
Principles for Sustainable Tourism	39
Protecting Cultural Heritage	44
Conserving Natural Resources	44
Prioritizing Local Communities	44
Align Visitor Expectations	45
Detail of the Quality Plan	47
Chapter III: Local development through a tourist product	50
Entrepreneur	51
Characteristics and Competences	51
Types of Entrepreneurs	52
Entrepreneur’s Responsibility	53
Challenges and Opportunities	54
Market Niches	55
Importance of Focusing on Niches	57
Types of Market Niches	58
Benefits of Niche Marketing	59

Key Elements for Selecting a Market Niche	60
Niche for “Chalate Adventure Tours”	62
Logo	64
Slogan	65
Mission	65
Vision	65
Values	66
References	67

Abstract

The "Chalate Adventure Tours" project is a comprehensive ecotourism initiative designed to promote nature-based tourism in the department of Chalatenango, El Salvador. This project seeks to offer authentic and sustainable experiences that connect visitors with the region's rich biodiversity and local culture. It focuses on three main objectives: boosting local economies by prioritizing community suppliers and labor, fostering ecosystem preservation through direct tourist participation in conservation activities such as reforestation, and increasing environmental and cultural awareness among visitors.

The project's justification lies in its ability to harmonize ecological conservation with community development, responding to the growing demand for sustainable travel. The proposed ecotourism packages include transportation from San Salvador, accommodation in eco-cabins built with local materials, traditional breakfast, and guided experiences covering hiking in Cerro Eramón, reforestation workshops, and kayaking at La Puntona for wildlife observation, along with cultural visits to La Palma. "Chalate Adventure Tours" aligns with sustainable development principles, contributing to well-being, local economic growth, climate action, and terrestrial life conservation, serving as a model for responsible tourism that enriches both the traveler and the destination.

Introduction

As the writer Wendell Berry wisely said, “The Earth is what we all have in common.” In a world increasingly aware of the importance of sustainability and connection with nature, the "Chalate Adventure Tours" project emerges as an innovative ecotourism proposal in the heart of El Salvador. Specifically, this initiative focuses on the department of Chalatenango, a region blessed with stunning natural beauty and vibrant local culture. Our program is meticulously designed not only for those seeking adventure and deep immersion in natural environments but also for individuals committed to making a positive impact through interaction with local communities and fostering environmental conservation.

"Chalate Adventure Tours" positions itself as a response to the growing demand for travel experiences that go beyond mere recreation, offering travelers the opportunity to enrich their lives while contributing to the economic and ecological well-being of Chalatenango. In this project report, we will outline the objectives that direct our mission, provide a robust justification for its significance, give a detailed overview of our tourism product and its unique features, explore the type of tourism included in our offerings, and explain how the implementation of human development and sustainability strategies is integrated into every aspect of our operations.. This document aims to provide a comprehensive overview of how "Chalate Adventure Tours" not only promises memorable adventures but also actively contributes to the preservation of El Salvador's natural and cultural heritage.

CHAPTER I:
PROFILE OF A TOURIST PRODUCT

Objectives

General Objective

To promote nature-based tourism in the department of Chalatenango through authentic and sustainable experiences that allow visitors to discover and appreciate the natural attractions of the region.

Specific Objectives

To boost local economies by prioritizing the hiring of guides, food suppliers, and accommodation services from communities near the promoted areas.

To develop ecosystem preservation activities, involving tourists in conservation initiatives that raise ecological awareness and promote sustainability.

To inform and raise awareness among tourists regarding local flora, fauna, and culture, as well as the importance of environmental conservation.

Justification

The "Chalate Adventure Tours" project is a compelling initiative that combines ecotourism with community development and environmental conservation in Chalatenango, El Salvador. This tour operator not only enhances ecological preservation through activities like wildlife observation but also supports community development by directly involving locals in tourism-related opportunities, such as traditional cuisine and artisanal crafts. Moreover, this venture addresses the growing demand for sustainable travel experiences, offering travelers the opportunity to connect deeply with nature while supporting local communities. By focusing on responsible tourism practices that promote ecosystem preservation and educate visitors about the rich biodiversity of the region, the project fosters a greater awareness of the environmental challenges faced by these areas. In essence, this product does not merely aim to provide unforgettable adventures; it aspires to create a sustainable model of tourism that harmonizes ecological conservation with community development, thus enriching both the traveler and the destination.

Product Description

"Chalate Adventure Tours" is a tour operator that offers ecotourism packages in the department of Chalatenango, El Salvador. We focus on creating authentic and sustainable experiences that allow visitors to explore the region's biodiversity while supporting the development of local communities and promoting environmental conservation. Our mission is to connect travelers with nature by providing an immersion into Salvadoran culture and the natural beauty of the surroundings.

Our product ecotourism packages will include:

Travel and Logistics: We provide seamless transportation from San Salvador to Chalatenango, ensuring that all logistics are handled for you, enabling a stress-free travel experience.

Accommodation: Guests will stay in eco-cabins built with local materials. Each cabin allows visitors to immerse themselves in the natural surroundings while enjoying the comforts of home.

Breakfast Included: Each morning begins with a traditional breakfast featuring local ingredients, enabling visitors to taste the authentic flavors of the region.

Guided Experiences: Our knowledgeable guides will lead exciting activities, including hiking in the Cerro Eramon, participation in a reforestation workshop, and kayaking at the Puntona, where guests can observe local wildlife.

Proposed Itinerary

Day 1: Arrival and Nature Exploration

The journey begins with the arrival in Chalatenango, where visitors will be welcomed to an eco-cabin crafted from local materials, ensuring a comfortable stay that adheres to our sustainability principles. Upon settling in, a presentation will introduce

guests to our ecotourism project, highlighting its positive impact on the local community and environment.

Following this, the tourists will engage in a guided hiking experience on Cerro Eramon, where they will explore the maintained trails showcasing the area's diverse ecosystems. This adventure offers a unique opportunity to connect with nature while observing local flora and fauna.

In the afternoon, travelers will take part in a tree planting workshop, contributing directly to ecosystem restoration efforts. This hands-on activity not only educates participants about local species but also makes them feel a sense of responsibility towards nature conservation.

Day 2: Adventure and Local Culture

The second day starts with a visit to the town of La Palma, well known for its vibrant culture and artisanal crafts. Here, guests can indulge in genuine local cuisine, enriching their cultural experience while supporting the local economy.

Later, the tourist will embark on a kayaking adventure at the Puntona. This serene activity allows for wildlife observation and appreciation of the aquatic ecosystems, emphasizing the importance of preserving these vital natural resources.

As the trip concludes, guests will return to San Salvador, However before that they will have a last opportunity to get local handicraft, food, clothes and more in order to continuing their support for the community.

Figure 1.1: An illustration of cabins for accommodation



Note. Image obtained for illustrations purposes

We are looking to stand as a model for ecotourism that intertwines exploration, education, and community support. To put it simply, “Chalate Adventure Tours” goes beyond just being a typical tour initiative. It prioritizes the well-being of the local people, their traditions, and the environment. Adhering to sustainable tourism principles, it enables travelers to explore and understand Chalatenango in a manner that honors, educates, and uplifts the surrounding community and natural surroundings. This approach to tourism aims to create positive change in the world, one journey at a time.

For our activities we recommend our customers bring this important equipment:

For Hiking the Cerro Eramon

- Walking stick (optional)
- Lightweight and breathable clothes
- Hiking boots or tennis

Figure 1.2: An Image showing hikers climbing Cerro Eramon



Note. Image obtained for illustrations purposes

For Sailing in Kayak at La Puntona

- River shoes or tennis
- Waterproof clothes
- Sunscreen

For this activity we will provide them with specific equipment for the activity kayaking, life jacket and paddle.

Figure 1.3: An Image showing la Puntona, Chalatenango



Note. Image obtained for illustrations purposes

General Equipment:

- Enough water
- Energy drinks (optional)
- Nutritious snacks like nuts or fruits.
- If they have a camera, it would be fine but with the smartphone it would be ok as well for capturing moments in pictures.

Qualities of the Tourist Service

Good Health and Well Being

The project offers nature-based experience such as hiking at the Cerro Eramon, kayaking at la Puntona, and also wildlife observation in almost all the activities that the tourist will do, these activities enhance physical health by encouraging active lifestyle.

Also, the interaction with natural environments is linked to reduce stress and improve relaxation supporting mental health.

For us it is very important to encourage outdoor activities, and we will do this by fostering outdoor engagement in a natural setting, Chalate Adventure Tours promote overall tourist wellness.

Decent Work and Economic Worth

The project prioritizes hiring local guides and local service providers (like guesthouses and food) ensuring that economic benefits remain within the community and bolster local economies; this will be possible by integrating local suppliers as we mentioned before for food, accommodation, craft, etc.

The project tries to develop and support micro and small businesses enhancing the local economic development.

Sustainable Cities and Communities

We will try to emphasize empowering local communities through participation in our activities as “Chalate Adventure Tours”. We consider that this small business can take advantage of the gastronomy, craft and tours around the natural areas.

As we know Chalatenango is not a metropolitan area, so it aligns the project with the goal of making human settlements sustainable, and with this we try to improve rural communities.

The project will work as an engine for long-term community development helping to preserve culture identities and natural surroundings while it benefits the residents.

Climate Action

Focuses on nature-based activities and promotes sustainable transportation options, leading to a lower carbon footprint, compared with traditional tourism. The project

contributes to climate resilience by supporting ecosystem conservation that acts as carbon sinks, mitigating climate change impact.

For this part we have an activity where all the tourists will have the opportunity to plant a tree, helping with the reforestation of Chalatenango.

Life on Land

The project will try to involve the tourists in conservation activities transforming observation into active participation in protecting natural resources, also we will try to teach tourists the importance of the flora and fauna empowering them to become protectors of the nature and make sustainable choices in the future.

Tourism Typology

Rural Tourism

The project takes place in rural areas of Chalatenango, involving small communities and promoting the local economy through the hiring of local guides, food suppliers, and accommodations. This tourism model directly supports rural development and offers an authentic countryside experience.

Nature Tourism

The core of the project revolves around exploring the natural beauty and biodiversity of Chalatenango. Activities such as hiking on Cerro El Eramon, wildlife observation, and staying in eco-cabins are all centered on experiencing and appreciating nature.

Adventure Tourism

The itinerary includes adventurous activities such as hiking and kayaking at Embalse de la Puntona, appealing to tourists seeking physical challenges and exciting outdoor experiences.

Ecotourism

This is the main focus of the project. It emphasizes environmental conservation, education, and community involvement, tourists participate in reforestation activities, learn about local biodiversity, and are encouraged to travel sustainably, which are all key pillars of ecotourism.

Cultural Tourism

Tourists are invited to visit La Palma, a town known for its cultural and artistic traditions. They engage in local cultural experiences, including artisanal crafts and traditions, aligning with the principle of protecting and celebrating cultural heritage.

Gastronomic Tourism

The project includes tasting traditional local food, contributing to the local economy and offering tourists a culinary experience that is part of the region's identity.

In summary, the project integrates these types of tourism by offering a sustainable, immersive experience that connects visitors to nature, culture, community, and adventure, all while promoting conservation and rural development.

Principles for Sustainable Tourism Development

Protecting Cultural Heritage

This project helps protect and promote the culture of Chalatenango. For example, tourists visit towns like La Palma, which is well known for its beautiful art and handmade crafts. By including these kinds of experiences, the project gives travelers a chance to learn

about the local traditions, food, art, and ways of life. It also gives local artists and communities the chance to share their culture in a respectful and authentic way. This helps keep the culture alive and gives value to local customs. Tourists are not just observers, they become part of experiences that celebrate the history and identity of the people in this region.

Conserving Natural Resources

One of the main goals of the project is to take care of nature. Visitors do activities like hiking in the mountains, planting trees, and observing wildlife, all of which help them connect with the environment in a respectful way. The project also includes eco-cabins built with local materials, which show their effort to reduce pollution and protect the area. Tourists learn why it's important to take care of the forests, rivers, and animals. In this way, the project doesn't only let people enjoy nature but also encourages them to help protect it. This creates a deeper respect for the natural world.

Prioritizing Local Communities

The project gives a lot of importance to the people who live in Chalatenango. It hires local guides, food suppliers, and host families or small businesses for accommodation. This means that the money from tourism stays in the local area and supports families and small business owners. It also creates new job opportunities and helps the local economy grow in a fair way. Instead of bringing in outside companies, the project gives priority to the people who know the area best and helps them benefit from tourism directly. It's a win-win for both the tourists and the community.

Align Visitor Expectations

Before and during their visit, tourists receive information about the project's goals, the importance of nature, and how to respect the local culture. There's even a welcome talk

explaining how the ecotourism project works and how it helps both nature and the local community. This helps visitors understand what kind of behavior is expected, for example, not littering, respecting animals, and appreciating the local way of life. It makes sure everyone is on the same page and supports the same values. When tourists know what to expect and how to act, they have a better experience and become part of something positive and respectful.

In simple words, “Chalate Adventure Tours” is not just a regular tourism project. It really cares about the people, the culture, and the environment. It follows the principles of sustainable tourism by helping visitors enjoy and learn about Chalatenango in a way that is respectful, educational, and supportive of the local community and nature. This kind of tourism helps make the world a better place, one trip at a time.

CHAPTER II:
ELEMENTS FOR THE DESIGN OF A TOURIST PRODUCT

The History of Tourism

Tourism is one of the oldest social and economic activities in human history. Its origins can be traced back to ancient civilizations, where travel was motivated by religion, culture, and leisure. In ancient Egypt, tourism was strongly linked to religion, as travelers visited sacred temples, pyramids, and monuments (Towner, 1996). Similarly, in Greece and Rome, tourism developed as a cultural phenomenon associated with festivals, theaters, and athletic competitions. The Olympic Games, for instance, attracted visitors from across the Mediterranean, while Roman elites engaged in leisure travel to coastal villas and spas (Walton, 2009).

During the Middle Ages, tourism shifted toward religious pilgrimages. Pilgrimage routes such as the Camino de Santiago in Spain or journeys to Canterbury in England became significant travel experiences, bringing together people from different regions of Europe (Collins-Kreiner, 2010). These pilgrimages created the foundation for hospitality industries, as inns and hostels emerged along travel routes to accommodate pilgrims.

The Renaissance marked the rise of educational and cultural tourism, especially with the emergence of the "Grand Tour." Wealthy young aristocrats from Northern Europe traveled across Italy and France to acquire cultural refinement, study classical art, and improve their social prestige (Black, 2003). The Grand Tour established tourism as both an educational practice and a status symbol among elites.

In the 19th century, the Industrial Revolution transformed tourism into a more structured economic activity. Technological innovations such as the railway and steamship expanded accessibility and affordability, allowing the middle class to engage in leisure travel (Walton, 2009). Coastal resorts, spa towns, and natural landscapes became popular

destinations, reflecting the growing importance of health, recreation, and nature in tourism experiences.

The 20th century marked the democratization of tourism, with the introduction of paid vacations, mass transportation, and international organizations promoting travel. The rise of the automobile and commercial aviation further accelerated tourism development. After World War II, tourism became a major global industry, supported by international institutions such as the World Tourism Organization (WTO) (World Tourism Organization, 2020).

Today, tourism is considered a complex socio-economic activity that contributes significantly to cultural exchange, economic development, and globalization. Its historical trajectory demonstrates how motivations for travel, spiritual, cultural, educational, or recreational, have evolved alongside technological progress and social transformations (Butler, 2015).

History of Tourism in El Salvador

Tourism in El Salvador has gone through different stages that reflect the country's social, political, and economic transformations. Its origins can be traced back to the nineteenth century, when the expansion of the railway allowed internal mobility toward recreational sites. Although these movements were not yet organized under a national policy, they marked the beginning of tourism as a social practice in the country (Academia Sabatina Departamental).

The first official efforts to promote tourism began in the 1920s. In 1924, during the presidency of Alfonso Quiñónez Molina, the government created the Board of Tourism and Agricultural and Industrial Propaganda, which had the mission of promoting the nation to domestic and foreign visitors. By 1930, the Legislative Assembly established the National

Tourism Board through Decree No. 135, giving greater formality to the sector (Academia Sabatina Departamental). Throughout the following decades, more initiatives appeared, such as the Boards of Ornamental Roads and Public Parks in 1939, the Progress and Tourism Boards in 1945, and the General Tourism Board in 1947. In 1948, the government began creating a network of “Turicentros,” recreational spaces that provided infrastructure for family tourism (ElSalvadorEsHermoso).

The modernization of Salvadoran tourism began in the 1960s, when the government created the Salvadoran Tourism Institute (ISTU) in 1961. This institution became the central authority in the sector, with responsibilities that included project design, regulation of companies, protection of heritage, and the publication of reports. In 1967, the Tourism Industry Promotion Law was enacted to stimulate investment in tourism businesses (Ministerio de Agricultura, MAG/DGFCR, as cited in Academia Sabatina Departamental). Beginning in 1968, ISTU also started publishing statistical bulletins to record the flow of international visitors (Instituto Salvadoreño de Turismo, 1968).

During the 1970s, the country experienced significant growth in tourism infrastructure. Hotels such as Camino Real, Ritz, Alameda, and Terraza were built in San Salvador, while coastal and mountain projects included the Hotel de Montaña in Cerro Verde and the Estero de Jaltepeque complex (CORSATUR, 1996). A milestone came in 1975, when the Miss Universe contest was held in San Salvador, which boosted international arrivals to nearly 300,000 visitors (CORSATUR, 1996). However, this momentum was abruptly halted by the armed conflict that began in the late 1970s.

Between 1980 and 1992, tourism in El Salvador entered a period of deep crisis. Warnings from foreign governments and restrictions on visas drastically reduced international arrivals, which fell to fewer than 100,000 per year. The few foreigners who

visited were mainly journalists, NGO staff, and advisors linked to the conflict. Hotels such as Camino Real became meeting points for the international press, while other tourism facilities were abandoned or underused (Universidad Dr. José Matías Delgado, 1993). This decline represented a setback of more than a decade in the sector's development.

With the signing of the Peace Accords in 1992, tourism slowly began to recover. In 1996, the Legislative Assembly created the Salvadoran Tourism Corporation (CORSATUR) through Decree No. 719, giving the sector a new institutional framework. Despite challenges such as earthquakes, insecurity, and limited infrastructure, tourism gradually consolidated as an important economic activity. In the early 2000s, strategies began to diversify, with an emphasis on ecotourism and cultural tourism (CORSATUR, 1996; Jover Martí, 2011).

In recent years, the country has sought to position itself more firmly in the international tourism market. One of the emblematic projects has been "Surf City," promoted by the government to turn the Salvadoran coast into a global destination for surf tourism. International arrivals reached 3.9 million in 2024, and tourism now represents about 14% of the Gross Domestic Product (The Washington Post, 2025). In addition, investments in security and infrastructure have contributed to changing the global perception of the country, with the arrival of new airlines, hotel chains, and international events (The Times, 2025).

In conclusion, the history of tourism in El Salvador reflects both the resilience of the sector and the influence of historical circumstances. From its early initiatives in the 1920s, through its golden years in the 1970s, the decline caused by the armed conflict, and its current revitalization, tourism has become a strategic axis for national development. The sector's challenges remain linked to sustainability, diversification of offerings, and

maintaining the image of a safe destination. Nevertheless, its recent growth shows that tourism has the potential to continue being one of the main engines of economic and social progress in El Salvador.

Natural Resources in Chalatenango

The Department of Chalatenango, situated in northern El Salvador, is endowed with a rich array of natural resources, including water, forests, fertile soils, wildlife, and hydropower infrastructure, that play a vital role in regional agriculture, ecology, and livelihoods.

Surface Water and Hydroelectric Resources

Chalatenango is abundant in freshwater resources sourced from rivers such as the Lempa, Sumpul, and Tamulasco. These rivers serve not only for domestic consumption and recreational use but also contribute significantly to hydropower generation via the Cerrón Grande Hydroelectric Dam (Embalse de Cerrón Grande), located on the Lempa River within Chalatenango (ChalatenangoSV, 2015).

The Cerrón Grande Dam and the resulting reservoir known as Lake Suchitlán is the largest artificial lake in the country, spanning approximately 135 km² and established in the mid-1970s (1973–1976) during the dam’s construction.

This reservoir supports diverse aquatic life, including native fish species, bird populations, and plant communities; it has also been designated a wetland of international importance under the Ramsar Convention.

Forests, Flora, and Climate

Chalatenango features extensive forested landscapes that act as essential ecological “lungs” for the region. Notable forested areas include *Cerro El Pital*, *La Montañona*, *Dulce Nombre de María* and *Santa Bárbara* ecological reserve (ChalatenangoSV, 2015).

The cooler highland climate supports valuable tree species such as pine, oak, and cypress. In these elevated zones, the cultivation of fruits (like apples, strawberries, and peaches), vegetables, and flowers thrive, benefiting from favorable conditions (ChalatenangoSV, 2015)

Fauna and Biodiversity

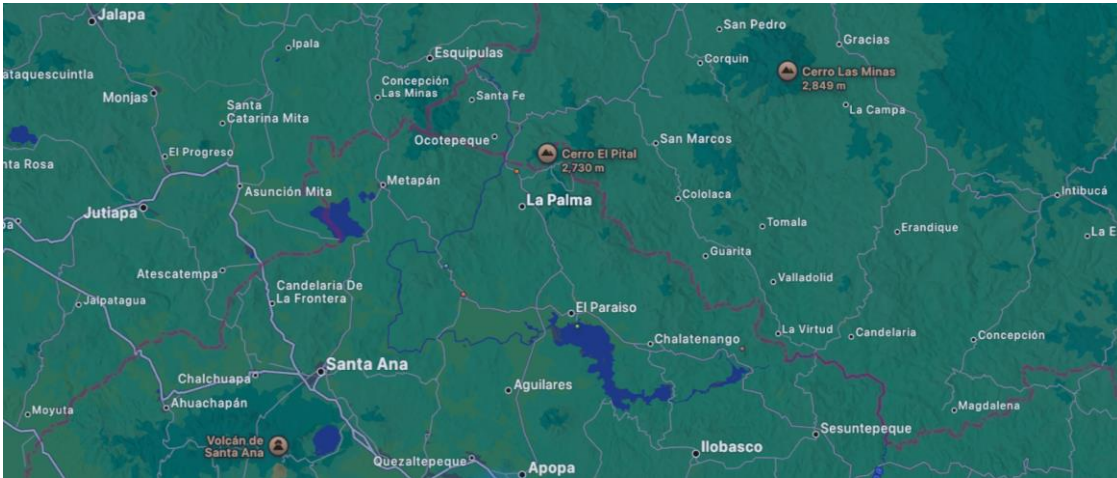
The reservoir area and surrounding water bodies are important habitats for wildlife, particularly migratory birds. Native fauna such as the torogoz (El Salvador's national bird), armadillos, deer, woodpeckers, wild cats, and raccoons are still found within Chalatenango (ChalatenangoSV, 2015)

Agriculture, Soil, and Land Use

Chalatenango's fertile lowlands support staple crops such as maize, beans, and sorghum. Upland areas are suitable for horticultural crops like vegetables and coffee, owing to fertile soils and favorable climatic conditions (ChalatenangoSV, 2015)

The department is also recognized as a major producer of vegetables and fruits, with municipalities like San Ignacio and La Palma being highlighted as leading agricultural zones. Recent governmental initiatives aim to reduce production costs and enhance yields through technical assistance programs (Connect El Salvador, 2021)

Figure 2.1: Location of La Palma, Chalatenango, El Salvador



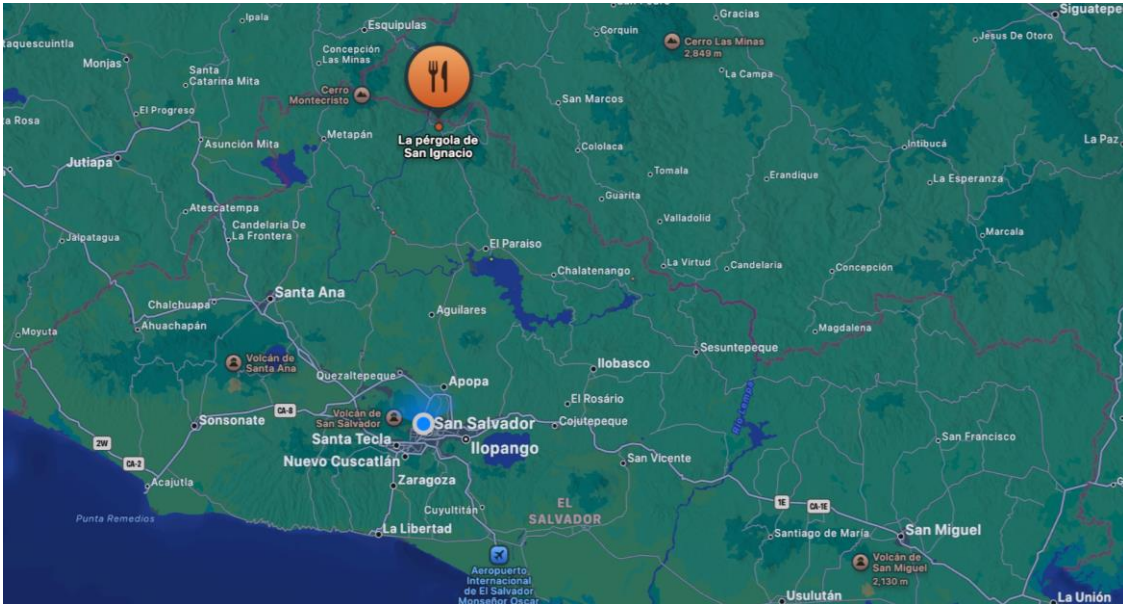
Note. Map obtained from the google maps application

Crafts and Non-Timber Resources

Beyond agricultural output, Chalatenango is renowned for its artisanal production. Local communities engage in crafting pottery, textiles, wooden carvings, baskets, and other traditional goods, products that reflect both the region's abundant natural materials and its cultural heritage (Chalatenango.SV)

A great example of the potential that the Chalatenango communities have to implement their resources is *La Pérgola de San Ignacio*, located in San Ignacio in the Chalatenango department of El Salvador, is a noteworthy rural tourism destination that combines hospitality, gastronomy, and natural surroundings in an immersive setting. The establishment includes a restaurant, café, bar, swimming pools, multipurpose halls, and comfortable rustic-style cabins (DeDiversión, 2023; Todoturismo).

Figure 2.2: Location of Cabins in San Ignacio, Chalatenango, El Salvador

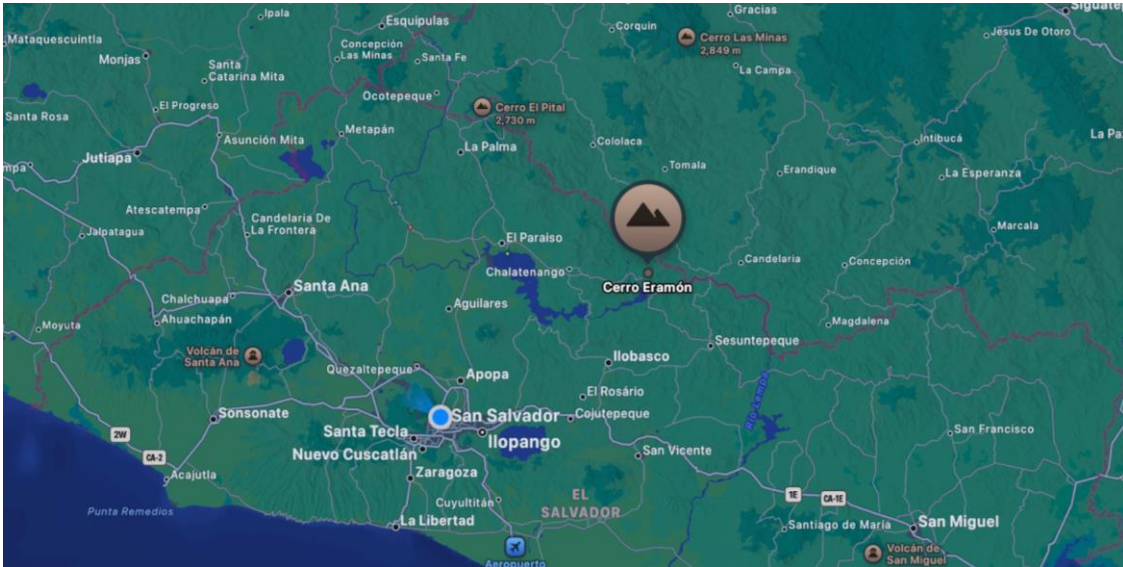


Note. Map obtained from the google maps application

Cerro Eramon and La Puntona

Among Chalatenango, most iconic natural landscapes are *Cerro Eramon* and *La Puntona*. *Cerro Eramon*, located near San Ignacio, rises over 900 meters above sea level and offers panoramic views of the Lempa River basin and Lake Suchitlan. It is valued both for ecotourism and for its biodiversity, including bird species and native flora (ChalatenangoSV, 2015).

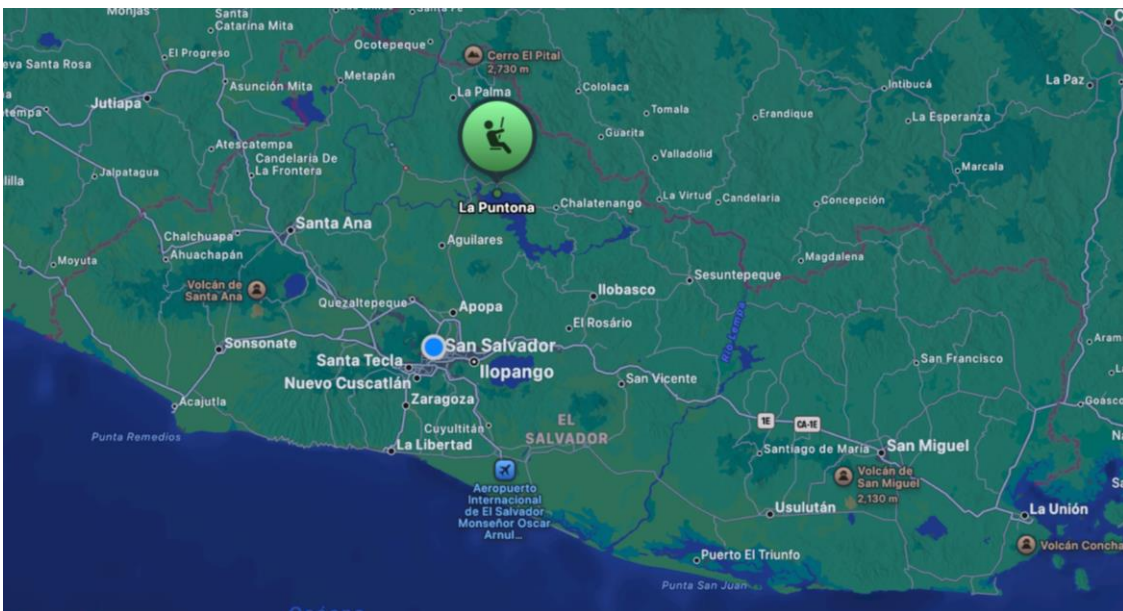
Figure 2.3: Location of Cerro Eramon, Chalatenango, El Salvador



Note. Map obtained from the google maps application

Similarly, *La Puntona* is a natural viewpoint situated in the municipality of Nombre de Jesús. It provides scenic landscapes of surrounding valleys and rivers while also serving as a habitat for diverse plant and animal species. Both sites highlight the department’s potential for sustainable tourism and conservation.

Figure 2.4: Location of La Puntona, Chalatenango, El Salvador

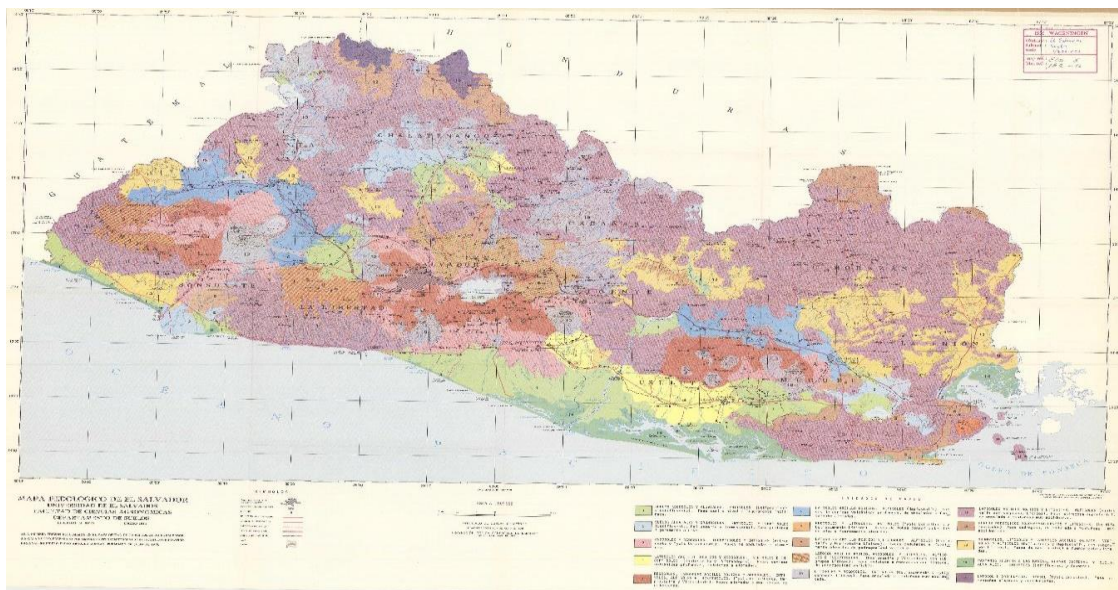


Note. Map obtained from the google maps application

Types of Soil in El Salvador

The study of soils in El Salvador is fundamental to understanding the distribution of agricultural areas, their productive suitability, and environmental challenges. Pedology in the country identifies several predominant types: alluvial soils, andisols (volcanic), reddish clayey latosols, grumosols, regosols, lithosols, and halomorphic soils in coastal zones. This pedological diversity is the result of volcanic geography, river dynamics, and climate influences (Ministerio de Agricultura, MAG/DGFCR, as cited in Academia Sabatina Departamental).

Figure 2.5: General Pedagogical Map of El Salvador



Note. From Mapa pedológico general de El Salvador, European Soil Data Centre (n.d.)

Types of Soil and Characteristics

a) Alluvial soils

According to official Salvadoran sources, “alluvial soils are formed by materials transported or deposited in coastal plains and interior valleys. They are highly productive

and suitable for intensive agriculture” (Ministerio de Agricultura, MAG/DGFCR, as cited in Academia Sabatina Departamental). These soils present variable textures (sand, silt, clay), high fertility, and moderate water retention. Their presence along riverbanks such as the Lempa favors crops like rice, sorghum, and fruit trees.

b) Andisols (volcanic soils)

Of volcanic origin, these soils contain volcanic ash and high organic matter. Their surface horizon is dark, with loamy texture and granular structure (20-40 cm thick). They are very fertile and suitable for coffee, sugarcane, and other intensive crops (ElSalvadorEsHermoso).

c) Reddish clayey latosols

These soils are found in mountainous areas in the north and volcanic hills. Their reddish color results from high iron content, and they have a blocky structure. Fertility can be moderate or high in protected areas, although conservation practices are required due to erosion risks (Academia Sabatina Departamental).

d) Grumosols

These soils are very clayey, with a dark gray or black color. When wet, they are plastic and sticky; when dry, they harden and crack, which hinders the growth of permanent high-value crops. They have low permeability and limited fertility, and are generally used for grazing or rudimentary crops (Ministerio de Agricultura, MAG/DGFCR).

e) Regosols

Regosols represent young soils, poorly developed, with a thin surface horizon (10–20 cm). They are loose and gray in color. Although they have good permeability, they lack nutrients and water retention capacity, which limits their agricultural use. In dry or coastal

areas, they are used for resistant crops such as coconut trees or pasture (Ministerio de Agricultura, MAG/DGFCR).

f) Lithosols

Lithosols are very shallow soils over hard rock, with strata truncated by sheet erosion. They contain gravelly material and variable texture (sand, gravel). Their agricultural use is poor and low yielding, although in stony areas they may allow “by plant” crops if properly managed (El Salvador Es Hermoso).

g) Halomorphic soils

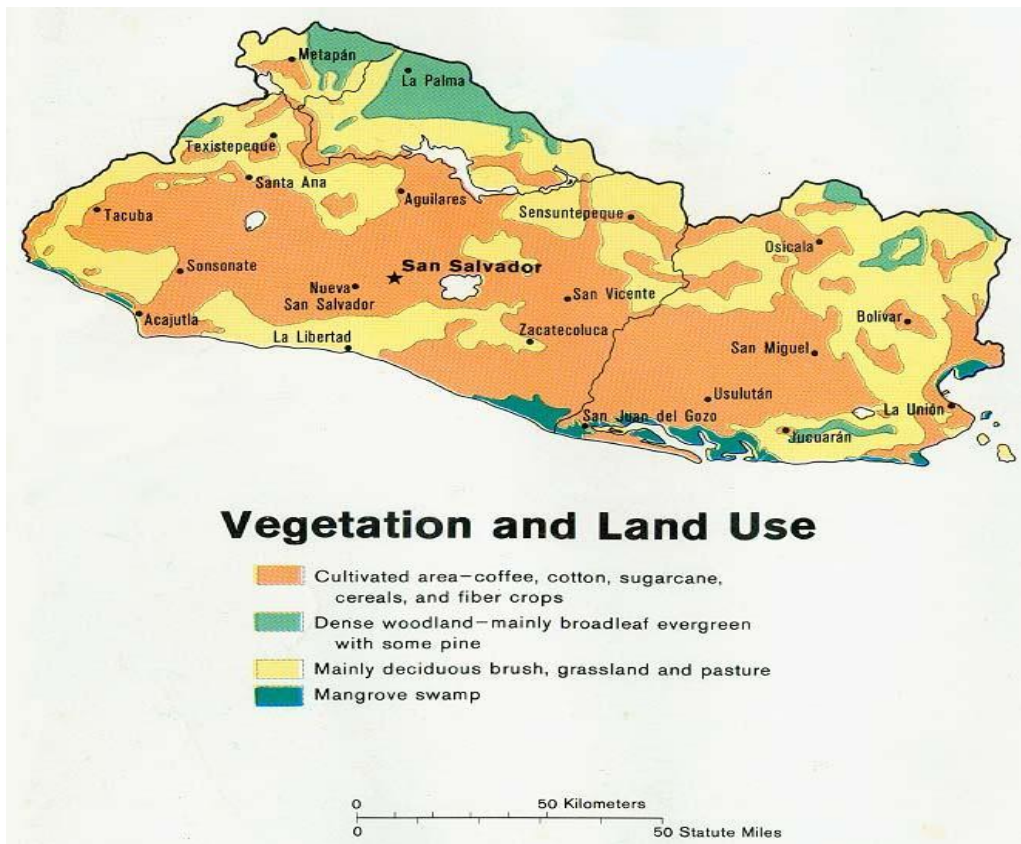
Located in mangrove and coastal estuary zones, these soils present high salinity and frequent anaerobic conditions. Their texture may be clayey, silty, or sandy in variable strata. They are not suitable for conventional agriculture, but in transitional zones they are used for palm production, whose leaves are traditionally used in handicrafts (Ministerio de Agricultura, MAG/DGFCR; Bahía de Jiquilisco, as cited in Academia Sabatina Departamental).

Figure 2.6: Distribution of andisols and lithosols in volcanic areas



Note. From Relief map of El Salvador, Blue Green Atlas (n.d.)

Figure 2.7: Coastal plain with alluvial and halomorphic soils



Note. From *El Salvador land* (1980)

Spatial Distribution and Agricultural Applications

- **Western and central region**, including the Apaneca-Ilamatepec volcanic ranges: predominance of fertile andisols, used for coffee and sugarcane.
- **Intermontane valleys** (San Miguel, Usulután, La Paz): presence of grumosols, reddish clayey latosols, and alluvial soils. Alluvial soils are fertile and suitable for intensive agriculture, while grumosols and reddish latosols have limited use unless erosion is controlled.
- **Coastal zones and lowlands of the Lempa River**: predominance of alluvial soils and, in flood-prone areas, halomorphic soils, which support adapted vegetation such as mangroves.

- **Mountainous and rugged terrains:** on volcanic hills and slopes, lithosols, regosols, and andisols predominate. Their depth varies with topography and allows limited or specialized production where possible.

Importance and Environmental Challenges

According to recent analyses of agricultural resources, volcanic and alluvial soils sustain approximately 70% of national agricultural production, being essential for emblematic crops such as coffee, maize, and beans (El Salvador Es Hermoso). However, soils with low fertility or shallow profiles, such as regosols or lithosols, pose risks of excessive erosion and low productivity without proper conservation.

Mountainous soils, such as reddish latosols on steep slopes, may suffer erosion due to heavy rainfall if management techniques are not implemented. In coastal areas, halomorphic soils are unsuitable for agriculture but valuable for ecosystems like mangroves, which provide essential environmental services such as filtration, coastal protection, and wildlife habitat.

Table 2.1: Explanation of type of soils

Soil Type	Origin / Location	Main Characteristics	Suitable for
Alluvial	Valleys, riverbanks	High fertility, variable texture	Intensive agriculture (rice, fruit crops)
Andisols	Volcanic areas (ashes)	Very fertile, volcanic environment	Coffee, sugarcane, cacao crops

Red Latosols	Volcanic hills and mountains	Clayey, blocky structure	Moderate agriculture/forest habitat
Grumosols	Wet interior valleys	Sticky clay, poor root growth	Grazing, rustic crops
Regosols	Dry areas, young plains	Poorly developed, rapid drainage	Resilient crops, pastures
Lithosols	Land over rock	Shallow, stony	Limited use, rustic crops
Holomorphic	Mangroves, coastal estuaries	High salinity, anaerobic conditions	Halophytic vegetation, handicrafts

Note. Adapted from *ElSalvadorEsHermoso*

The diversity of soils in El Salvador is attributable to its volcanic, fluvial, and geological origins. Andisols and alluvial soils stand out for their agricultural productivity, while red latosols, grumosols, regosols, and lithosols exhibit variability in fertility and use depending on the relief and management practices. Although halomorphic soils are of little use for crops, they hold strategic ecological value in coastal ecosystems. Understanding this classification allows for the optimization of land use according to its potential and promotes sustainable practices.

Cultural Identity and Intangible Tourism Resources

In an increasingly globalized world, preserving and valuing cultural identity becomes essential to maintaining the diversity and richness of societies. Cultural identity is the set of values, traditions, customs, and artistic expressions that characterize a community

or group of people (Enciclopedia). Below we will explain in more depth what cultural identity is, its constituent elements, the factors that influence it, and the importance of preserving it.

Concept of cultural identity

Cultural identity refers to everything that identifies a community or group of people and distinguishes them from others. It includes aspects such as language, traditions, music, cuisine, clothing, religion, among others. Cultural identity is not static, but evolves and transforms over time, influenced by various factors (Enciclopedia).

Elements that make up cultural identity

Cultural identity is composed of a series of elements that define it and make it unique.

Some of these are:

- **Language:** the language spoken by a community is one of the fundamental pillars of its cultural identity.
- **Traditions:** customs and practices passed down from generation to generation are an essential part of cultural identity.
- **Music:** the rhythms and melodies of a community are an artistic expression that reflects its cultural identity.
- **Gastronomy:** typical foods and traditional recipes are a cultural expression that brings people together and represents their identity.
- **Clothing:** regional clothing and costumes are a way of expressing cultural identity and distinguishing oneself from other communities.
- **Religion:** religious beliefs and practices influence a community's cultural identity and shape its values and norms (Enciclopedia).

Examples of cultural identity in different countries and regions

Cultural identity manifests itself in different ways in each country and region of the world. Some notable examples are:

- **Japan:** elements such as the tea ceremony, the art of origami, traditional kimono clothing, and Japanese music.
- **Mexico:** rich cuisine (tacos, enchiladas, mole), mariachi music, and the Day of the Dead.
- **India:** linguistic diversity, festivals such as Holi and Diwali, Bharatanatyam dance, and aromatic cuisine.
- **Africa:** tribes and ethnic groups preserve traditions through music, dance, ceremonies, and traditional clothing (Enciclopedia).

Factors influencing cultural identity

- **History and the past:** historical events, conquests, migrations, and colonization influence identity.
- **Geography and the natural environment:** climate, resources, and landscape shape traditions.
- **Language and communication:** language determines literature, music, and collective identity.
- **Religion and beliefs:** religious practices shape values and lifestyles.
- **Gastronomy and culinary traditions:** ingredients and dishes reflect intangible heritage.
- **Music and the arts:** rhythms, dances, and arts convey stories and values.

- **Clothing and fashion:** traditional costumes and designs express climate and customs.
- **Social values and norms:** beliefs and ethical principles define coexistence (Enciclopedia).

Importance of preserving cultural identity

Preserving cultural identity allows appreciation of diversity, strengthens self-esteem and belonging, supports tourism and the local economy, and promotes intercultural dialogue and peace. Traditions, cuisine, music, and crafts attract visitors and generate income for communities while building inclusive societies (Enciclopedia).

Ways to preserve and promote cultural identity

Efforts to preserve cultural identity include:

- Education and teaching of history and traditions.
- Valuing and promoting language and cultural expressions.
- Conservation of historic sites and monuments.
- Promoting community participation and social organization.

Supporting local artists and artisans (Enciclopedia).

Principles for Sustainable Tourism

In September 2015, all UN Member States adopted the 2030 Agenda for Sustainable Development, 17 integrated Goals and 169 targets that balance people, planet, prosperity, peace and partnership, with a core pledge to “leave no one behind.” (United Nations, 2015).

1. No Poverty

Goal 1 is about end poverty in all its forms by expanding social protection systems, ensuring equal rights to economic resources (e.g., land, finance), building resilience to climate- and conflict-related shocks, and reducing the proportion of people living in poverty according to national definitions and the extreme-poverty threshold (United Nations, 2015).

2. Zero Hunger

Goal 2 is to end hunger and all forms of malnutrition by 2030 through food security, resilient and sustainable agriculture, improved productivity and incomes for small-scale producers, genetic diversity conservation, and reduced market distortions—backed by investment, research, and fair trade (United Nations, 2015).

3. Good Health and Well-Being

Goal 3 ensures healthy lives and promotes well-being for all at all ages by reducing maternal, neonatal, and child mortality; combating communicable and noncommunicable diseases; achieving universal health coverage; and addressing health risks from pollution, substance use, and road injuries (United Nations, 2015).

4. Quality Education

Goal 4 ensures inclusive, equitable quality education and lifelong learning by achieving universal completion of free primary and secondary schooling, expanding access to early childhood development and tertiary education, improving literacy and numeracy, and upgrading education facilities and teacher training (United Nations, 2015).

5. Gender Equality

Goal 5 achieve gender equality and empower all women and girls by ending discrimination and violence, eliminating harmful practices (e.g., child marriage, FGM), ensuring equal participation in leadership, recognizing unpaid care, safeguarding sexual and

reproductive health and rights, and guaranteeing equal access to resources and technology (United Nations, 2015).

6. Clean Water and Sanitation

Goal 6 ensures availability and sustainable management of water and sanitation for all by achieving universal access to safe and affordable drinking water, adequate sanitation and hygiene, improving water quality and efficiency, protecting water-related ecosystems, and strengthening transboundary cooperation and community participation (United Nations, 2015).

7. Affordable and Clean Energy

Goal 7 ensures access to affordable, reliable, sustainable and modern energy by expanding renewable energy's share, improving energy efficiency, upgrading infrastructure, and supporting clean-energy research, finance, and international cooperation, especially for least developed countries and small islands (United Nations, 2015).

8. Decent Work and Economic Growth

Goal 8 promotes sustained, inclusive and sustainable economic growth, full and productive employment and decent work for all by boosting productivity and diversification, supporting entrepreneurship and SMEs, improving resource efficiency, protecting labor rights and safe workplaces, promoting sustainable tourism, and expanding access to finance (United Nations, 2015).

9. Industry, Innovation and Infrastructure

Goal 9 is to build resilient infrastructure, promote inclusive and sustainable industrialization and foster innovation by increasing access to quality, sustainable and resilient infrastructure (including regional and transborder), upgrading industries for clean

technologies, enhancing research and development, and expanding ICT access (United Nations, 2015).

10. Reduced Inequalities

Goal 10 proposes to reduce inequality within and among countries by promoting social, economic and political inclusion; ensuring equal opportunity; adopting fiscal, wage and social protection policies; improving representation for developing countries in global governance; and facilitating safe, regular migration (United Nations, 2015).

11. Sustainable Cities and Communities

Goal 11 make cities and human settlements inclusive, safe, resilient and sustainable by improving housing and basic services, sustainable transport, participatory urban planning, cultural and natural heritage protection, disaster risk reduction, air quality and waste management, and access to green and public spaces (United Nations, 2025).

12. Responsible Consumption and Production

Goal 12 ensures sustainable consumption and production patterns by adopting lifecycle approaches to resource efficiency, halving per-capita global food waste, managing chemicals and waste soundly, promoting corporate sustainability reporting and green public procurement, and strengthening consumer information and education (United Nations, 2015).

13. Climate Action

Goal 13 is to take urgent action to combat climate change and its impacts by strengthening resilience and adaptation, integrating climate measures into policies and planning, improving education and awareness, honoring UNFCCC commitments, and mobilizing finance and capacity-building—recognizing differentiated responsibilities. (United Nations, 2015)

14. Life Below Water

Goal 14 proposes to conserve and sustainably use the oceans, seas and marine resources by reducing marine pollution and ocean acidification, regulating fisheries and ending IUU fishing, protecting coastal and marine ecosystems, prohibiting harmful subsidies, and enhancing scientific knowledge and maritime governance (United Nations, 2015).

15. Life on Land

Goal 15 protect, restore and promote sustainable terrestrial ecosystems by halting deforestation, combating desertification and land degradation, conserving biodiversity, and ending poaching and trafficking—while integrating ecosystem and biodiversity values into planning and accounting (United Nations, 2015).

16. Peace, Justice and Strong Institutions

Goal 16 is about promoting peaceful and inclusive societies, providing access to justice for all, and building effective, accountable and inclusive institutions by reducing violence and corruption, ensuring legal identity and rule of law, strengthening participatory decision-making, protecting fundamental freedoms, and developing transparent institutions (United Nations, 2015).

17. Partnerships for the Goals

Goal 17 strengthens the means of implementation and revitalizes the Global Partnership through finance, technology, capacity-building, trade, systemic issues (policy and institutional coherence), multi-stakeholder partnerships, and robust data, monitoring, and accountability (United Nations, 2015).

Based on the sustainable development objectives for our eco-tourism travel agency "Chalate Adventure Tours", the following are applicable:

Protecting Cultural Heritage

This project helps protect and promote the culture of Chalatenango. For example, tourists visit towns like La Palma, which is well known for its beautiful art and handmade crafts. By including these kinds of experiences, the project gives travelers a chance to learn about the local traditions, food, art, and ways of life. It also gives local artists and communities the chance to share their culture in a respectful and authentic way. This helps keep the culture alive and gives value to local customs. Tourists are not just observers, they become part of experiences that celebrate the history and identity of the people in this region.

Conserving Natural Resources

One of the main goals of the project is to take care of nature. Visitors do activities like hiking in the mountains, planting trees, and observing wildlife, all of which help them connect with the environment in a respectful way. The project also includes eco-cabins built with local materials, which show their effort to reduce pollution and protect the area. Tourists learn why it's important to take care of the forests, rivers, and animals. In this way, the project doesn't only let people enjoy nature but also encourages them to help protect it. This creates a deeper respect for the natural world.

Prioritizing Local Communities

The project gives a lot of importance to the people who live in Chalatenango. It hires local guides, food suppliers, and host families or small businesses for accommodation. This means that the money from tourism stays in the local area and supports families and small business owners. It also creates new job opportunities and helps the local economy grow in a fair way. Instead of bringing in outside companies, the project gives priority to

the people who know the area best and helps them benefit from tourism directly. It's a win-win for both the tourists and the community.

Align Visitor Expectations

Before and during their visit, tourists receive information about the project's goals, the importance of nature, and how to respect the local culture. There's even a welcome talk explaining how the ecotourism project works and how it helps both nature and the local community. This helps visitors understand what kind of behavior is expected, for example, not littering, respecting animals, and appreciating the local way of life. It makes sure everyone is on the same page and supports the same values. When tourists know what to expect and how to act, they have a better experience and become part of something positive and respectful.

In simple words, "Chalate Adventure Tours" is not just a regular tourism project. It really cares about the people, the culture, and the environment. It follows the principles of sustainable tourism by helping visitors enjoy and learn about Chalatenango in a way that is respectful, educational, and supportive of the local community and nature. This kind of tourism helps make the world a better place, one trip at a time.

Strategic Quality Plan

Table 2.2: strategic quality plan explanation

Name	Role	Actions	Improvements
Luis	Operations Coordinator	<ul style="list-style-type: none"> - Design and supervise tourist itineraries. - Negotiate with local suppliers to ensure quality accommodation services. - Organize conservation and volunteer activities. 	<ul style="list-style-type: none"> -10% discount on the first booking of large groups (5 or more people). - Constantly evaluate the quality of the services offered.
Yesli	Marketing Promoter	<ul style="list-style-type: none"> - Develop advertising campaigns for ecotourism packages. - Create educational content about ecotourism and conservation on the website and social media. - Attend tourism fairs to promote the agency's offers. 	<ul style="list-style-type: none"> -"Taste and Learn" culinary experience package at no additional cost, where visitors can join in preparing a traditional dish. - Conduct surveys to better understand the preferences of potential tourists. - Collaborate with travel influencers to increase the agency's visibility.
Diego	Natural Guide	<ul style="list-style-type: none"> - Conduct tours and interpret local flora and fauna. - Organize educational workshops on environmental conservation. - Create a safe and enjoyable environment during excursions. 	<ul style="list-style-type: none"> -Additional benefits such as a free tour along a hiking route for those participating in reforestation activities. - Gather feedback from tourists to refine guiding and teaching techniques.
Nicolás	Community Relations Manager	<ul style="list-style-type: none"> - Establish and maintain relationships with local communities. - Conduct visits and meetings with community leaders to assess their needs. - Prioritize hiring local suppliers for meals and crafts. 	<ul style="list-style-type: none"> -Loyalty program: for every 5 trips made, the customer receives a 50% discount on their next trip, contributing to sustainability and encouraging return visits from tourists. - Evaluate the impacts of ecotourism on communities and adjust activities accordingly.

Figure 2.8: Diagram Quality Plan



Note. Diagram Quality Plan made by ourselves.

Detail of the Quality Plan

1. Customer Experience

The customer experience focuses on creating unforgettable moments that highlight the natural wonders and rich local culture of Chalatenango. This includes planning personalized itineraries that offer authentic activities such as hiking, reforestation workshops, and local cuisine. Furthermore, community guides should be trained to share

their knowledge about the flora, fauna, and traditions of the region, thereby achieving a deep connection between the tourist and the environment. By providing entertainment, education, and real immersion in the local culture, the customer experience becomes not only memorable but also transformative.

2. Customer Service

Exceptional customer service should be a priority from the first contact to the end of the tourist experience. This involves creating a highly trained and accessible customer service team capable of effectively responding to questions and concerns before, during, and after the trip. Staff should be trained in interpersonal skills and the value of ecotourism, so that each interaction not only resolves an issue but also enriches the customer experience. Moreover, using digital platforms to facilitate bookings, inquiries, and post-sale service can significantly enhance the perception of service.

3. Customer Satisfaction

To ensure customer satisfaction, it is crucial to establish methods to measure tourists' opinions about their experience. This can be achieved through satisfaction surveys at the end of the tour, as well as through online reviews. Analyzing this data will allow identification of areas for improvement and recognition of the aspects that tourists enjoy the most. A proactive approach to resolving issues and adjusting services based on active feedback will not only help improve the offering but will also demonstrate that the agency cares about the well-being of its customers, ultimately increasing overall satisfaction.

4. Continuous Improvement

Continuous improvement is essential to adapt to the changing expectations and needs of customers in ecotourism. This involves establishing an evaluation cycle that considers feedback from all levels: tourists, staff, and local communities. Regular training

programs for staff and updating offerings based on market trends and best practices in sustainability are key strategies. Additionally, implementing periodic reviews of itineraries and services will ensure that the agency not only meets but exceeds tourists' expectations.

5. Customer Loyalty

Fostering customer loyalty involves building lasting and meaningful relationships. This can be achieved by implementing a loyalty program that offers incentives for future bookings, such as discounts, exclusive offers, or priority access to new tours. Furthermore, maintaining constant communication through newsletters, updates about the positive impact of ecotourism on communities, and reminders of activities can keep customer interest alive. Recognizing and celebrating customers' participation in conservation and community development programs will also strengthen their connection with the agency.

Chapter III:

Local development through a tourist product

Entrepreneur

An entrepreneur is an individual who initiates, organizes, and manages a business venture, often introducing innovation and assuming financial, social, and personal risks to create value. This concept goes beyond profit-making; it involves generating sustainable benefits for both the entrepreneur and society. According to Belás and Ključnikov (2016), entrepreneurs commonly share traits such as expertise, responsibility, and perseverance, which enable them to identify opportunities and turn them into viable projects.

Entrepreneurship can manifest in several forms: traditional business creation, social entrepreneurship which prioritizes community well-being and environmental care, or intrapreneurship, which occurs within existing organizations to promote innovation. Regardless of the form, successful entrepreneurs are characterized by strategic planning, adaptability, ethical decision-making, and a strong sense of commitment to their vision.

In the case of Chalate Adventure Tours, the entrepreneurial figure must identify opportunities within Chalatenango's underdeveloped tourism sector. This includes the ability to mobilize local resources such as natural landscapes, crafts, and community collaboration while taking calculated risks to design eco-friendly and culturally respectful experiences that attract both local and international visitors.

Characteristics and Competences

Entrepreneurial success depends on both personal characteristics and professional competences. Belás and Ključnikov (2016) identified key traits such as technical expertise, responsibility, and perseverance as essential for entrepreneurs to overcome challenges. Similarly, Sugathadasa and Wijekumara (2023) emphasize the importance of adaptability, motivation, and resilience in ensuring long-term business growth.

Personal characteristics include creativity, self-confidence, initiative, and risk tolerance. These traits allow entrepreneurs to navigate uncertainty and identify opportunities in dynamic markets. On the other hand, competences involve learned abilities such as financial management, strategic thinking, communication, and teamwork. A successful entrepreneur integrates these skills to sustain innovation and competitiveness.

For Chalate Adventure Tours, these competences are crucial: knowledge of sustainable tourism practices, organizational skills to coordinate tours and community activities, and effective communication to promote the project. Moreover, adaptability is key to dealing with environmental factors, such as weather conditions or local accessibility. The combination of technical skills and personal commitment ensures that the venture not only survives but grows sustainably.

Types of Entrepreneurs

Entrepreneurs can be categorized according to their goals, innovation level, and impact scope. According to the Small Business Economics Journal (2018), entrepreneurship can vary significantly across cultural and institutional contexts, resulting in diverse types:

- Innovative entrepreneurs introduce new products or services, transforming industries.
- Imitative or adaptive entrepreneurs replicate successful models and adapt them to local contexts.
- Social entrepreneurs focus on solving community or environmental problems rather than maximizing profits.
- Growth-oriented entrepreneurs aim to scale their ventures rapidly.

- Local or small-scale entrepreneurs prioritize sustainability and community integration.

For Chalate Adventure Tours, the most relevant type is social entrepreneurship, as it seeks to combine economic sustainability with cultural preservation and environmental protection. The project also reflects traits of adaptive entrepreneurship, since it adapts global ecotourism concepts to the local identity and natural wealth of Chalatenango.

Entrepreneur's Responsibility

Entrepreneurial responsibility integrates ethical, social, and environmental dimensions. As Triswanto (2023) explains, ethical entrepreneurship demands that companies contribute positively to society and the environment, not merely to their own profit. Similarly, Ramos-Hidalgo et al. (2021) argue that responsible practices enhance trust, reputation, and long-term competitiveness.

For Chalate Adventure Tours, this responsibility translates into four pillars:

- **Environmental responsibility:** Adopting eco-friendly practices, reducing waste, and conserving biodiversity.
- **Social and cultural responsibility:** Involving local communities, respecting traditions, and promoting fair employment.
- **Operational ethics:** Ensuring transparent pricing, safety, and honest communication.
- **Educational responsibility:** Promoting environmental awareness among visitors and encouraging respect for local culture.

This aligns with the idea of ethical leadership, as noted by Zhu and Zhao (2024), who highlight that responsible entrepreneurship must become part of the company's identity rather than a marketing strategy.

Challenges and Opportunities

Entrepreneurial initiatives in rural and nature-based tourism encounter a characteristic mix of structural constraints and strategic opportunities. On the challenges side, infrastructure deficits (roads, reliable transport, telecommunications), seasonality in demand, limited access to capital, and vulnerability to environmental hazards are recurrent problems that hamper initial consolidation and scale-up. Rural tourism projects also face operational complexities such as ensuring consistent service quality (trained guides, safety standards), coordinating with dispersed local providers, and complying with regulatory permits related to land use and environmental protection. These constraints increase transaction costs and raise barriers to professionalization. Empirical studies on small and medium enterprises emphasize that limited financial literacy and deficient managerial capabilities are strongly associated with lower survival and slower growth (Sugathadasa & Wijekumara, 2023).

Nevertheless, contemporary trends provide a set of important opportunities. First, demand for sustainable, experience-oriented tourism has grown steadily: many travelers prefer authentic, low-impact experiences that combine nature, community interaction, and learning. This demand creates a market niche that operators can address with differentiated offers (MarketinHouse, 2018; HubSpot). Second, digital marketing and direct-distribution platforms reduce marketing entry costs and enable focused communication toward narrow

segments (HubSpot). Third, public and private funding instruments oriented to rural development, conservation, or social entrepreneurship may provide seed funding and technical assistance when projects demonstrate community benefit and ecological safeguards (Plutus Education; Ramos-Hidalgo et al., 2021).

For a touristic product like Chalate Adventure Tours, an evidence-based strategy would combine risk mitigation (diversify product portfolio across seasons, purchase insurance, set safety protocols), capability-building (training for local guides, basic financial management), and value-chain integration (formal agreements with local suppliers, transparent benefit-sharing mechanisms). Leveraging local attractions (e.g., lakes, trails, community artistry, and natural heritage referenced in local press) as unique selling propositions, while communicating sustainability credentials, will enhance market positioning (La Prensa Gráfica, 2024). Finally, adopting a phased growth model starts small, document impact, and scale gradually reduces exposure to external shocks and improves prospects for obtaining grants or impact-oriented financing.

Market Niches

A market niche is a narrowly defined subset of a broader market composed of consumers who share particular needs, preferences, or constraints that are not thoroughly satisfied by mass-market offerings. From a strategic standpoint, niche selection enables firms to concentrate resources, tailor the value proposition, and achieve a higher perceived fit between product features and client expectations (MarketinHouse, 2018; HubSpot). In tourism, niches often arise around specific motivators such as ecological conservation, active adventure, cultural immersion, wellness, or gastronomy and they can be defined along demographic, geographic, psychographic, or behavioral axes.

Two conceptual advantages make niche approaches attractive for small-scale tourism ventures. First, specialization reduces direct competitive pressure because fewer operators address the same combination of attributes; second, strong fit between offering and traveler values increases customer satisfaction and fosters loyalty, which is particularly relevant for experience-based services that rely on recommendations and repeat business. Academic literature emphasizes that, for small enterprises, successful niche strategies combine market knowledge, operational competences, and credible differentiation (Sugathadasa & Wijekumara, 2023).

Operationalizing a niche requires precise segmentation and testing: identify a target person (e.g., eco-conscious adventure travelers aged 25–45), validate demand through small pilots or surveys, and develop distinctive delivery mechanisms (specialized guides, educational components, low-impact logistics) that are defensible (MarketinHouse, 2018; HubSpot). In addition, documentation of sustainability practices and community benefit through clear communications and, where feasible, third-party certifications reinforces the niche positioning and can ease partnerships with conservation funders or tourism networks (Plutus Education; Ramos-Hidalgo et al., 2021).

For Chalate Adventure Tours, the niche should be described not only by activities (hiking, kayaking, reforestation workshops) but by underlying traveler values (sustainability, cultural respect, learning). This dual definition activity and values improves targeting and supports premium pricing, because customers perceive added intangible benefits (authenticity, ethics, transformation).

Importance of Focusing on Niches

Concentrating on a well-defined market niche is a deliberate strategic choice that offers tangible benefits for new and small tourism enterprises. First, niche focus supports clearer positioning: when a firm articulates a distinct promise (e.g., sustainable adventure in a particular region), messaging becomes coherent across channels and resonates more effectively with a narrow target audience (MarketinHouse, 2018; HubSpot). Clear positioning enhances brand recognition and reduces costs associated with broad, unfocused campaigns.

Second, niche specialization facilitates operational optimization. By centering offerings on a narrower set of activities, companies can standardize procedures, train staff in specialized skills (e.g., naturalist interpretation, low-impact trail management), and build relationships with specific local partners (artisans, community leaders, conservation groups), which improves service quality and reliability. From a resource standpoint, this focus permits efficient allocation of limited capital and management attention critical for start-ups that cannot compete financially with larger providers (Sugathadasa & Wijekumara, 2023).

Third, economic logic favors niche strategies in experience sectors: customers seeking specialized experiences often accept higher prices in return for authenticity, safety, and added meaning. Niche customers are more likely to produce high-value word-of-mouth referrals and repeat visits. Empirical evidence on small firm development suggests that differentiation through specialization correlates with higher margins and more stable demand (Sugathadasa & Wijekumara, 2023).

Finally, for projects with social and environmental aims, niche focus enables credible integration of impact goals into the core offer. Rather than treating sustainability as

an add-on, operators can make it the backbone of their value proposition this authenticity attracts mission-aligned travelers and can unlock access to support from conservation donors or ethical tourism platforms (Plutus Education; Ramos-Hidalgo et al., 2021). For Chalate Adventure Tours, focusing on an eco-adventure and community immersion niche enhances marketing efficiency, operational excellence, and the capacity to demonstrate measurable social-environmental contributions.

Types of Market Niches

Market niches can be categorized by the criterion used for segmentation, and in tourism several practical classifications are especially useful for designing targeted offers.

The principal categories include:

- **Demographic niches**, segmented by age cohort, income bracket, family status, or profession. For example, “active seniors” or “student backpackers.”
- **Geographic niches**, focused on visitors from particular origin markets or on visitors interested in specific landscapes (mountain lovers, island seekers).
- **Psychographic niches**, built around lifestyles, values, and motivations (eco-conscious travelers, luxury seekers, spiritual retreatists). Psychographic segmentation is especially powerful for experience tourism because motivations drive choice. (HubSpot; MarketinHouse, 2018).
- **Behavioral niches**, based on purchase or usage patterns (frequent short-break travelers, voluntourists, conference attendees).

- **Activity-based niches**, defined by the primary activity (birdwatching, kayaking, culinary tours). These are common in nature and adventure tourism sectors (Zoftify, 2024).

In practice, robust niches are often hybrid: they combine a primary activity with psychographics and sometimes geographic origin (e.g., “European eco-adventurers aged 30–50 seeking multi-day hikes with community homestays”). Hybrid niches allow more precise value propositions and tailored marketing.

For operators, selecting which type to pursue depends on local assets and organizational competencies. If the destination offers strong natural features and community culture (as Chalatenango does), combining activity-based (hiking, kayaking) with psychographic (values: sustainability, authenticity) and geographic targeting (domestic and select international markets) is recommended. Local press items that describe particular natural attractions (lakes, volcanic features, and new attractions) can support precise product design and storytelling for each niche segment (La Prensa Gráfica, 2024).

Benefits of Niche Marketing

Niche marketing targeting a narrow, well-defined segment yields multiple advantages especially relevant for experience-based businesses. From a marketing perspective, messaging becomes more persuasive when tailored to the specific motivations and language of the niche; the cost per conversion often declines because promotional efforts avoid broad, low-yield audiences (HubSpot). Economically, firms can charge premium prices when they offer unique value aligned with customers’ identity and desires, travelers who seek sustainability or deep cultural exchange frequently prefer operators that share those ideals and accept higher prices for authenticity and responsible practices.

Operationally, niche focus improves resource allocation and reduces complexity: fewer product variants, focused supplier lists, and consistent standards streamline management. Reputation effects are stronger: satisfied niche customers generate targeted word-of-mouth that reaches more potential clients within the same segment, amplifying marketing efficiency. Additionally, for mission-driven projects, niche marketing enables credibility in social and environmental claims, making it easier to access impact financing, partnerships with NGOs, or placement in curated ethical tourism directories (Plutus Education; Ramos-Hidalgo et al., 2021).

There are also risk-management benefits. A niched operator that builds loyal relationships may be less exposed to low-cost competition; while macro shocks (e.g., travel bans) still affect demand, a tight community of repeat customers and a diversified set of niche products (short-stays, workshops, volunteer programs) improves resilience. For Chalate Adventure Tours, niche marketing supports the articulation of clear packages eco-hikes, cultural homestays, conservation workshops each promoted to a defined persona. Using regional stories (e.g., volcanic sites, new recreational attractions) and credible sustainability practices will increase perceived value and conversion rates (MarketinHouse, 2018; La Prensa Gráfica, 2024).

Key Elements for Selecting a Market Niche

Selecting a viable niche requires a structured assessment of market, operational, financial, and ethical variables. I summarize the principal elements that should guide decision-making:

Demand validation, there must be observable or measurable interest through search trends, surveys, pilot bookings, or partner inquiries showing that the niche has

paying customers. Relying only on intuition risks pursuing niches that are too narrow or price-insensitive (MarketinHouse, 2018; HubSpot).

Profitability and unit economics, conduct a bottom-up estimation of costs per product (transport, guides, insurance, food, margins) and compare against feasible price points for the target segment. Niches often accept premiums, but the premium must cover fixed and variable costs (Sugathadasa & Wijekumara, 2023).

Operational feasibility, the venture must have, or be able to develop, the necessary capabilities: trained staff, logistics, safety protocols, supplier reliability, and administrative capacity to manage permits and taxes (Gerencie; Empredepyme).

Competitive landscape, analyze existing suppliers. Are there many operators addressing the same offer? If competition exists, identify differentiators (unique routes, certified conservation practices, community partnerships) that are defensible.

MarketinHouse (2018) recommends assessing both direct and indirect competitors.

Scalability and adaptability, evaluate whether the niche can support growth (expand routes, add related offers) or whether it becomes saturated quickly. Scalability does not always mean massification scaling can be achieved by geographic replication while preserving quality.

Alignment with mission and ethics, choose a niche compatible with the project's values; for socially oriented ventures, consistency between claims and practices is essential to maintain credibility (Plutus Education; Ramos-Hidalgo et al., 2021).

Access to networks and funding: consider whether the niche enables partnerships (local governments, conservation NGOs) or access to impact funds that reduce early risk.

Legal and environmental constraints: verify land-use regulations, protected-area rules, and local customary norms. In tourism, ignoring these constraints can produce reputational and legal liabilities.

For Chalate Adventure Tours, a practical selection process would combine desk research (demand signals, press about local attractions), stakeholder interviews (community leaders, local guides), small-scale pilots (weekend trips), and a basic financial model to confirm unit economics. Using local media references (La Prensa Gráfica) to substantiate unique assets (volcanic sites, new attractions such as water tricycles) strengthens the narrative when applying for funding or partnerships (La Prensa Gráfica, 2024).

Niche for “Chalate Adventure Tours”

Based on asset analysis, market trends, and the project’s social-environmental mission, the recommended niche for Chalate Adventure Tours is:

“Eco-adventure travelers seeking authentic cultural immersion and low-impact outdoor experiences in Chalatenango”.

This niche can be described across multiple dimensions:

Psychographic profile: travelers who prioritize environmental stewardship, authentic cultural encounters, and experiential learning. They value guides who interpret natural and cultural meaning, prefer small group formats, and often seek opportunities to contribute (e.g., reforestation workshops).

Demographic / Behavioral profile: adults aged approximately 25–55 with moderate to high discretionary income, education levels that value sustainability, and behavioral traits such as prior participation in nature activities or interest in voluntourism.

They are likely to book via specialty platforms or direct channels after reviewing social proof and clear sustainability information.

Activity portfolio: multi-day hikes, interpretive nature walks, kayaking or water-based activities where feasible, community-hosted workshops (crafts, gastronomy), and short conservation projects (tree planting, trail maintenance). Local attractions highlighted in national media (volcanic sites, lakes, and novel recreational offerings) should be integrated into itineraries to add narrative specificity (La Prensa Gráfica, 2024).

Value proposition: authentic encounters, environmental stewardship, safety and community benefit. Price positioning can be mid-to-premium because the offer bundles guided expertise, local partnerships, and measurable contributions to community projects.

Operational considerations: ensure capacities for safety, insurance, guide training, and transparent benefit-sharing with communities. Pilot programs to validate demand and unit economics are recommended before scaling. Leverage digital storytelling (photos, short films, guest testimonials) and targeted content (ecotourism blogs, niche travel forums, HubSpot-style inbound marketing) to reach the segment (HubSpot; MarketinHouse, 2018).

Finally, build measurable social and environmental KPIs (e.g., number of trees planted per season, percentage of revenue shared with partner communities, waste reduction rates) and communicate them publicly to increase trust among niche customers and potential funders (Plutus Education; Ramos-Hidalgo et al., 2021). This strategic alignment of product, mission, and evidence will help Chalate Adventure Tours to position itself as a credible, sustainable operator in El Salvador's emerging niche of eco-adventure tourism.

Logo

As an ecotourism agency based in Chalatenango, we chose this image as the logo for Chalate Adventure Tours because it reflects the essence of who we are and what we promote. The mountains in the background symbolize the natural beauty and adventure that define our region, representing the majestic landscapes of Chalatenango that inspire exploration and respect for nature. The green tones and open scenery convey our commitment to sustainability, environmental conservation, and the promotion of responsible tourism practices that protect our surroundings.

The design elements, such as the mountain peaks and arrows, highlight our adventurous spirit and our mission to guide visitors along safe and memorable paths through nature. Additionally, the slogan “Green paths, lasting memories” captures the purpose of our work to create authentic experiences that connect travelers with the environment while leaving a positive impact on the local community.

In essence, this logo embodies our identity as a Chalatenango-based ecotourism agency: a reflection of our landscapes, our values, and our dedication to offering meaningful and sustainable travel experiences.

Figure 3.1 *Logo of Chalate Adventure Tours*



Note: logo created by Chalate Adventure Tours team.

Slogan

Our slogan, “**Green paths, lasting memories,**” was chosen because it perfectly represents the philosophy and purpose of **Chalate Adventure Tours**. The phrase “*Green paths*” symbolizes our dedication to ecotourism and environmental sustainability, emphasizing our commitment to protecting the natural landscapes of Chalatenango while offering responsible and educational travel experiences. It reflects our desire to guide visitors along routes that are not only scenic and adventurous but also respectful of nature and local ecosystems.

Meanwhile, “*lasting memories*” expresses the emotional and personal connection we want each traveler to take with them after their journey. Our goal is to create meaningful experiences that go beyond simple tourism moments that inspire appreciation for nature, culture, and community.

Together, the words capture our vision of offering tours that are both environmentally conscious and deeply memorable, leaving a positive mark on our visitors and on the beautiful region of Chalatenango.

Mission

“To create authentic ecotourism experiences in Chalatenango that inspire visitors to enjoy, respect, and protect nature and local culture.”

Vision

“To be the leading tourism adventure in Chalatenango, recognized for its commitment to sustainability, community, and responsible adventure.”

Values

Sustainability: We care for and protect the environment in every experience.

Authenticity: We offer real experiences that reflect the natural and cultural richness of Chalatenango.

Respect: We value nature, local communities, and each visitor.

Collaboration: We work together with the community to grow in a shared way.

Responsible adventure: We promote safe, educational and conscious tourism.

Our values guide every moment of how we operate, shaping experiences, relationships, and outcomes:

Sustainability means caring for and protecting the environment in every encounter minimizing waste, conserving water and energy, protecting biodiversity, sourcing locally and ethically, and supporting conservation initiatives that strengthen Chalatenango's landscapes for future generations.

Authenticity means offering real experiences that reflect the region's natural beauty and cultural richness, co-created with local experts and communities, and presented with respect for traditions, crafts, and knowledge.

Respect means valuing nature, local communities, and every visitor by treating places and people with dignity, ensuring informed consent and safety, protecting privacy, and honoring local norms and sacred sites.

Collaboration means working together with the community to grow in a shared, transparent way building long-term partnerships, reinvesting in local livelihoods, and ensuring community leadership in planning, governance, and benefit-sharing.

Responsible adventure means promoting safe, educational, and conscious tourism robust risk management, thorough pre-trip briefings, responsible wildlife and habitat

interaction, Leave No Trace practices, and opportunities for guests to learn, reflect, and contribute to conservation and community wellbeing.

References

Academia Sabatina Departamental. (n. d.). *Historia del turismo en El Salvador*.

https://www.academia.edu/32609004/historia_del_turismo_en_el_salvador

CORSATUR. (1996). *Creación de la Corporación Salvadoreña de Turismo. Decreto*

Legislativo No. 719. Ministerio de Turismo de El Salvador.

Cultura.gob.mx. (n. d.). *Patrimonio cultural y turismo*.

https://www.cultura.gob.mx/turismocultural/cuadernos/cuaderno11_3_1.php

Definición.edu.lat. (n. d.). *Identidad cultural – Qué es, concepto, elementos y ejemplos*.

Recuperado de <https://definicion.edu.lat/concepto/identidad-cultural.html>

Ejemplo.com.ar. (n. d.). *Ejemplos de identidad cultural: tradiciones y costumbres que nos*

definen. Recuperado de <https://ejemplo.com.ar/identidad-cultural-ejemplos/>

ElSalvadorEsHermoso. (n. d.). *Centros turísticos en El Salvador*.

<https://elsalvadoreshermoso.com/>

Enciclopedia. (n. d.). *La importancia de la identidad cultural: concepto, elementos y*

ejemplos para comprenderla mejor. [https://enciclopedia.com/la-importancia-de-la-](https://enciclopedia.com/la-importancia-de-la-identidad-cultural-concepto-elementos-y-ejemplos-para-comprenderla-mejor/)

[identidad-cultural-concepto-elementos-y-ejemplos-para-comprenderla-mejor/](https://enciclopedia.com/la-importancia-de-la-identidad-cultural-concepto-elementos-y-ejemplos-para-comprenderla-mejor/)

Escritos de Psicología. (n. d.). *Elementos de la identidad cultural y su importancia en*

nuestras vidas. [https://www.esritosdepsicologia.es/elementos-de-la-identidad-](https://www.esritosdepsicologia.es/elementos-de-la-identidad-cultural/)

[cultural/](https://www.esritosdepsicologia.es/elementos-de-la-identidad-cultural/)

Instituto Salvadoreño de Turismo. (1968). *Boletín estadístico de turismo*. ISTU.

Jover Martí, F. J. (2011). *Tourism in El Salvador: The challenge of consolidating as an emerging destination.*

<https://revistas.um.es/turismo/article/download/140101/126161/531321>

The Times. (2025, April). *El Salvador's new adventure and surf tourism boom.*

<https://www.thetimes.co.uk>

The Washington Post. (2025, May 8). *El Salvador wants America's prisoners. And its tourists.* <https://www.washingtonpost.com/travel/2025/05/08/el-salvador-surfing-tourism-prison-complex>

Universidad Dr. José Matías Delgado. (1993). *Historia y desarrollo del turismo salvadoreño.* UJMD.

Conceptualista.com. (n. d.). *Identidad cultural: Concepto, origen y tipos explicados.*

<https://definicion.conceptualista.com/ejemplos-de-identidad-cultural/>

Marketinhouse.es. (n. d.). *5 ejemplos de nicho de mercado.*

<https://www.marketinhouse.es/5-ejemplos-de-nicho-de-mercado/#:~:text=Con%20los%205%20ejemplos%20de%20nichos%20de%20mercado>

Blog.HubSpot.es. (n. d.). *¿Qué es un nicho de mercado?*

<https://blog.hubspot.es/marketing/nicho-de-mercado>

LaPrensaGráfica. (2024, September 3). *Triciclos acuáticos: la nueva atracción que puedes visitar en El Salvador.* <https://www.laprensagrafica.com/turismo/Triciclos-acuaticos-la-nueva-atraccion-que-puedes-visitar-en-El-Salvador-Donde-se-encuentran-y-cuanto-cuestan-20240903-0019.html>

LaPrensaGráfica. (2024, September 4). *8 lugares de El Salvador que en realidad son volcanes y quizá no sabías cómo llegar y sus atractivos.*

<https://www.laprensagrafica.com/salvadorenisimo/8-lugares-de-El-Salvador-que-en-realidad-son-volcanes-y-quizá-no-sabias-como-llegar-y-sus-atractivos-20240904-0056.html>

PlutusEducation.com. (n. d.). *Social responsibility in business ethics*.

<https://plutuseducation.com/blog/social-responsibility-in-business-ethics/>

Definicion.de. (n. d.). *Emprendimiento*.

<http://definicion.de/emprendimiento/#ixzz48GRqKR7f>

Gerencie.com. (n. d.). *El perfil de un emprendedor*.

<http://www.gerencie.com/emprendimiento.html>

EmprendePyme.net. (n. d.). *12 características básicas de los emprendedores de éxito*.

<http://www.emprendepyme.net/el-perfil-de-un-emprendedor.html>